

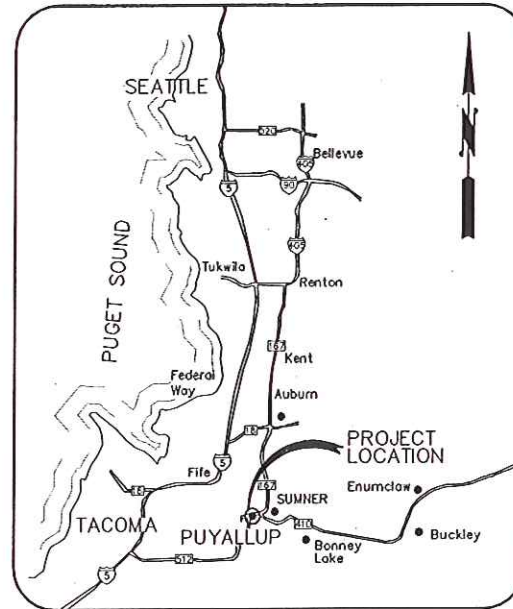
# CITY OF PUYALLUP

## WATER AND SANITARY SEWER SYSTEMS SEISMIC UPGRADES

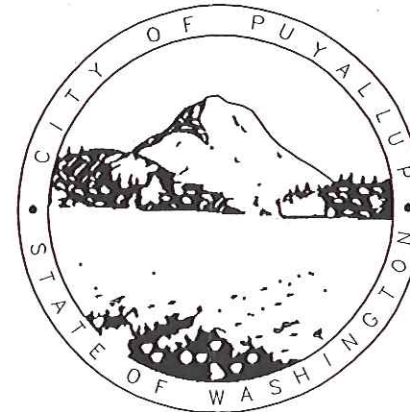
CITY OF PUYALLUP  
 DEPARTMENT OF PUBLIC WORKS  
 333 S. MERIDIAN  
 PUYALLUP, WASHINGTON 98371

G&O JOB No. 10530

OCTOBER 2010



VICINITY MAP  
 NOT TO SCALE



PRELIMINARY  
 FOR AGENCY  
 REVIEW

**Gray & Osborne, Inc.**  
 CONSULTING ENGINEERS  
 2102 CARRIAGE DRIVE SOUTHWEST, BLDG 1  
 OLYMPIA, WASHINGTON 98502 (360) 292-7481

### INDEX OF SHEETS

- CIVIL**
- C-1 ABBREVIATIONS, GENERAL SYMBOLS, PIPING SYMBOLS, LOCATION MAP, CONTROL POINTS AND SYMBOL LEGEND
  - C-2 STUCK RIVER BRIDGE PIPING MODIFICATIONS PLAN AND ELEVATION
  - C-3 EXISTING STUCK RIVER BRIDGE WATER MAIN PLAN, ELEVATION, SUPPORT AND CONNECTION LAYOUT AND DETAILS
  - C-4 STUCK RIVER BRIDGE WATER MAIN DETAILS

RECEIVED  
 OCT 23 2010  
 CITY OF SUMNER  
 COMMUNITY DEVELOPMENT



### DATUM

HORIZONTAL DATUM: NAD83(07)

VERTICAL DATUM: NGVD29  
 (HELD PIERCE COUNTY  
 VERTICAL BM161-1)

### CITY OFFICIALS

KATHY TURNER  
 TAMI BROUILLET  
 JOHN KNUITSEN  
 RICK HANSEN  
 NICOLE MARTINEAU  
 KENT BOYLE  
 DON MALLOY

MAYOR  
 DEPUTY MAYOR  
 COUNCILMEMBER  
 COUNCILMEMBER  
 COUNCILMEMBER  
 COUNCILMEMBER  
 COUNCILMEMBER

RALPH DANNENBERG

CITY MANAGER

### CONTACT PERSONNEL

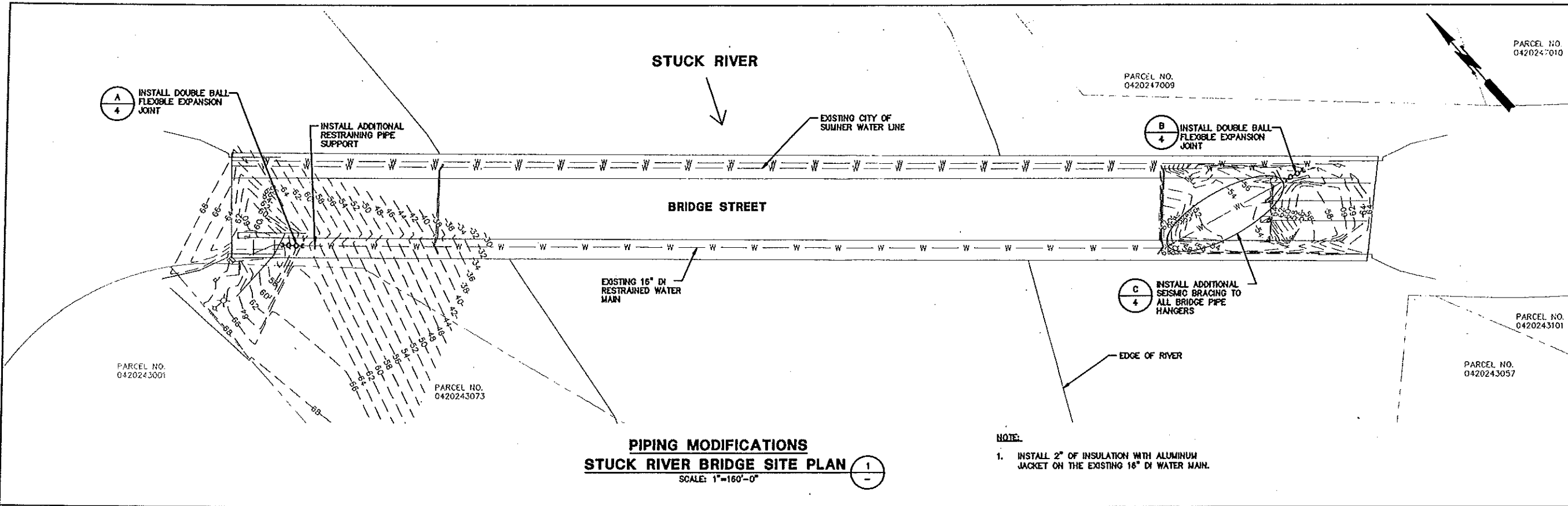
NAME	AGENCY	PHONE No.
CRAIG HALE	WATER SUPERINTENDENT	253-841-4321
DON HENRY	SEWER SUPERINTENDENT	253-841-5515
JIM MORROW	PUBLIC WORKS DIRECTOR	253-841-4321
MARVIN COX, P.E.	CAPITAL IMPROVEMENT	253-841-5499
SYED ZAIDI, P.E.	PROJECT ENGINEER	

### GENERAL NOTES

1. IN GENERAL, EXISTING STRUCTURES AND FACILITIES ARE NOTED AS "EXISTING" AND ARE SHOWN IN LIGHT LINE WEIGHTS OR AS SCREENED BACKGROUND. NEW CONSTRUCTION, STRUCTURES, FACILITIES, AND FEATURES ARE SHOWN IN HEAVY LINE WEIGHTS.
2. MANY OF THE SYMBOLS SHOWN ON THIS LEGEND ARE USED ONLY WHERE THEY PROVIDE CLARITY AND ARE NOT NECESSARILY USED IN ALL APPLICATIONS. SOME CONTRACT DRAWINGS MAY HAVE ADDITIONAL LEGENDS APPLICABLE FOR THAT SPECIFIC DRAWING. SYMBOLS SHOWN ON SPECIFIC DRAWINGS GOVERN.
3. THE CONTRACTOR SHALL VERIFY ALL PLANIMETRIC FEATURES AND DIMENSIONS PRIOR TO STARTING WORK AND SHALL NOTIFY THE ENGINEER OF ANY DISCREPANCIES.
4. ALL DIMENSIONS SHOWN ON THE CONTRACT DRAWINGS AND DESCRIBED IN THE SPECIFICATIONS REFER TO THE HORIZONTAL AND VERTICAL PROJECTED PLANES, UNLESS OTHERWISE INDICATED.

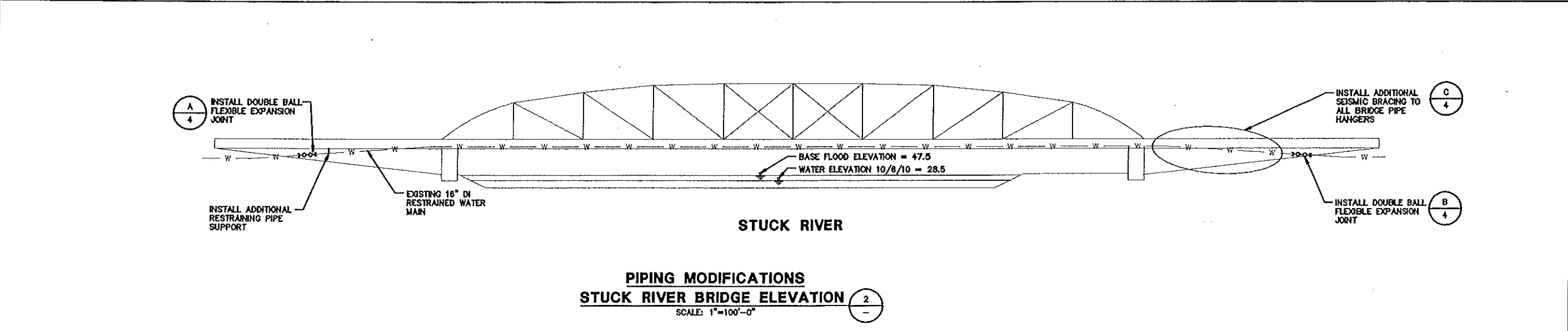
Rev 1 1/4 PLN 2010-00047





**PIPING MODIFICATIONS  
STUCK RIVER BRIDGE SITE PLAN** 1  
SCALE: 1"=160'-0"

**NOTE:**  
1. INSTALL 2" OF INSULATION WITH ALUMINUM JACKET ON THE EXISTING 16" DI WATER MAIN.



**PIPING MODIFICATIONS  
STUCK RIVER BRIDGE ELEVATION** 2  
SCALE: 1"=100'-0"

- NOTES:**
- PROJECT ZONING:  
GENERAL COMMERCIAL AND MIXED USE DEVELOPMENT.
  - FLOOD ZONE: AE
  - BASE FLOOD ELEVATION = 47.5'

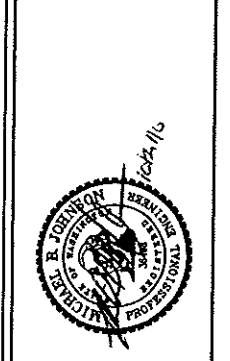
**APPROVED**  
BY \_\_\_\_\_  
CITY OF PUYALLUP  
ENGINEERING DEPARTMENT  
DATE \_\_\_\_\_

**NOTE:**  
This approval is void after 1 year from approval date.  
The City will not be responsible for errors and/or omissions on these plans.  
Field conditions may dictate changes to these plans as determined by the City Engineer.

**Gray & Osborne, Inc.**  
CONSULTING ENGINEERS  
2102 CARRIAGE DRIVE, SOUTHWEST, BLDG 1  
OLYMPIA, WASHINGTON 98502 • (360) 292-7461

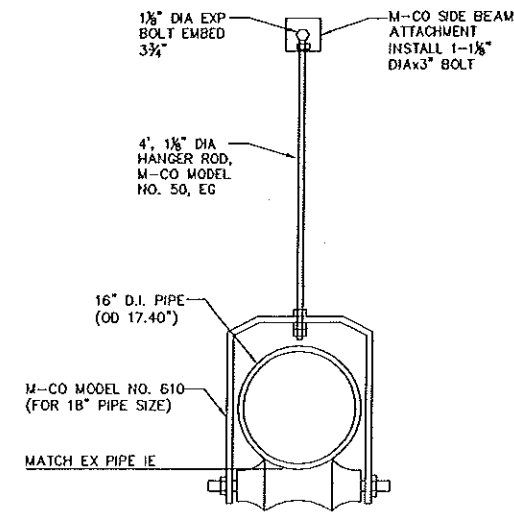
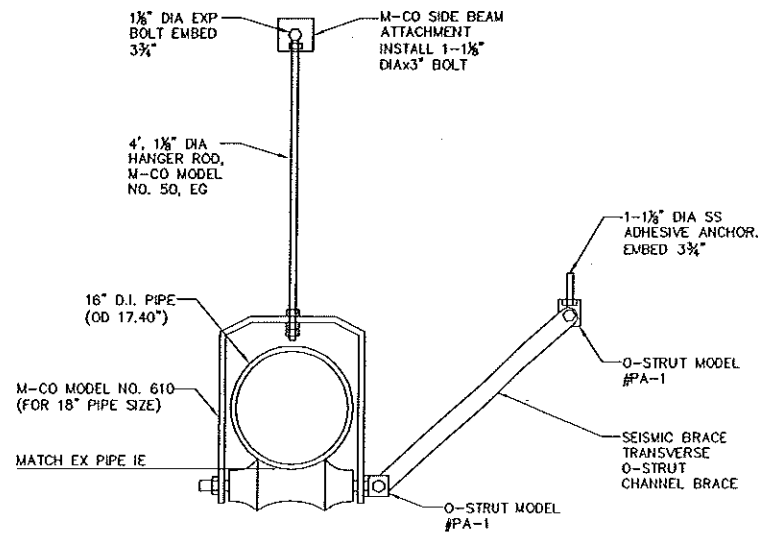
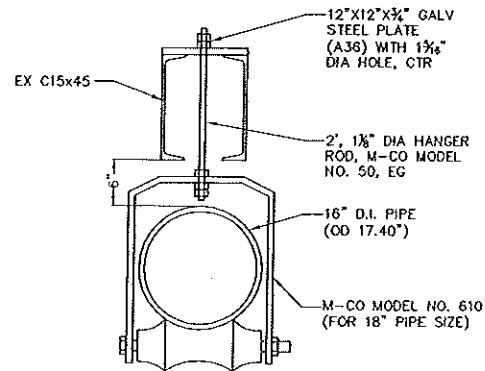
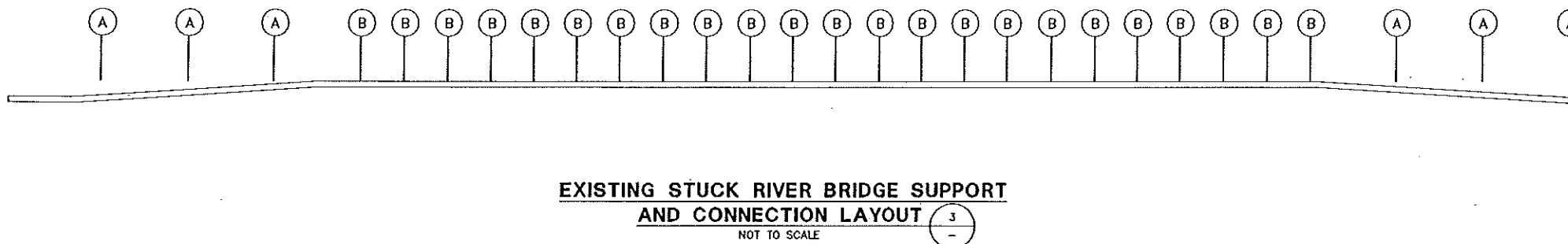
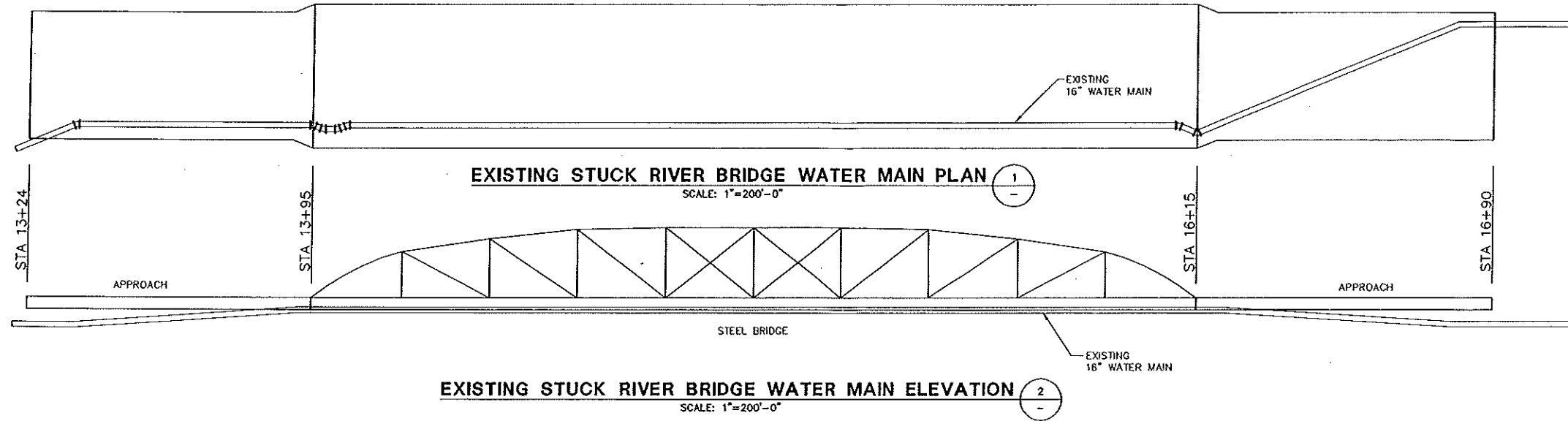
DATE: OCT 2010  
SCALE: NOTED  
DRAWN: EH  
CHECKED: SLG  
APPROVED: MBJ

DATE	APPD



**CITY OF PUYALLUP**  
PIERCE COUNTY  
WASHINGTON  
**WATER AND SANITARY SEWER SYSTEMS SEISMIC UPGRADES**  
STUCK RIVER BRIDGE  
PIPING MODIFICATIONS PLAN AND ELEVATION

SHEET: C-2  
OF: 4  
JOB NO.: 10530  
DWG: STUCK SITE PLAN



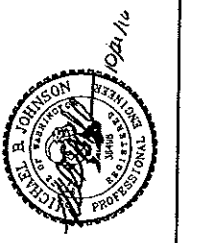
APPROVED  
BY \_\_\_\_\_  
CITY OF PUYALLUP  
ENGINEERING DEPARTMENT  
DATE \_\_\_\_\_

NOTE:  
This approval is void after 1 year from approval date.  
The City will not be responsible for errors and/or omissions on these plans.  
Field conditions may dictate changes to these plans as determined by the City Engineer.

**Gray & Osborne, Inc.**  
CONSULTING ENGINEERS  
2102 CARRAGE DRIVE SOUTHWEST, BLDG 1  
OLYMPIA, WASHINGTON 98502 • (360) 232-7463

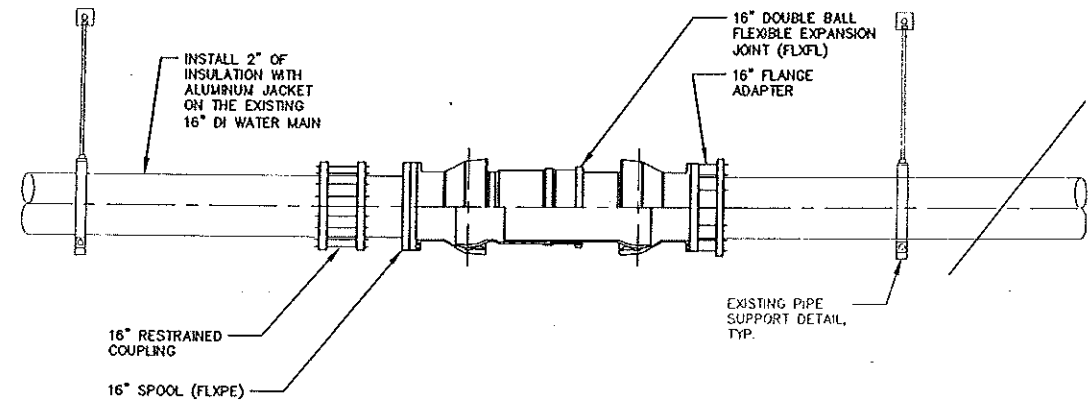
DATE: OCT 2010  
SCALE: NOTED  
DRAWN: EH  
CHECKED: SLG  
APPROVED: MBJ

REVISION	DATE	APPD
PRELIMINARY FOR AGENCY REVIEW		
No.		

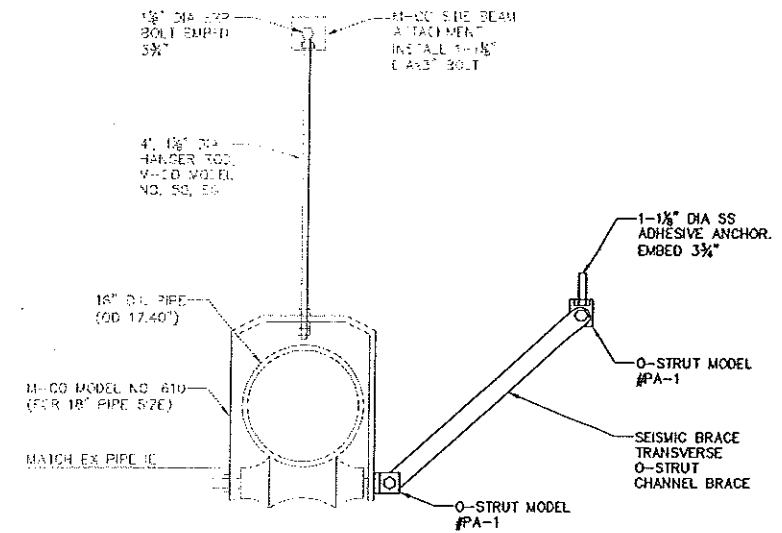


**CITY OF PUYALLUP**  
PERCE COUNTY  
WASHINGTON  
**WATER AND SANITARY SEWER SYSTEMS SEISMIC UPGRADES**  
EXISTING STUCK RIVER BRIDGE WATER MAIN PLAN, ELEVATION, SUPPORT AND CONNECTION LAYOUT AND DETAILS

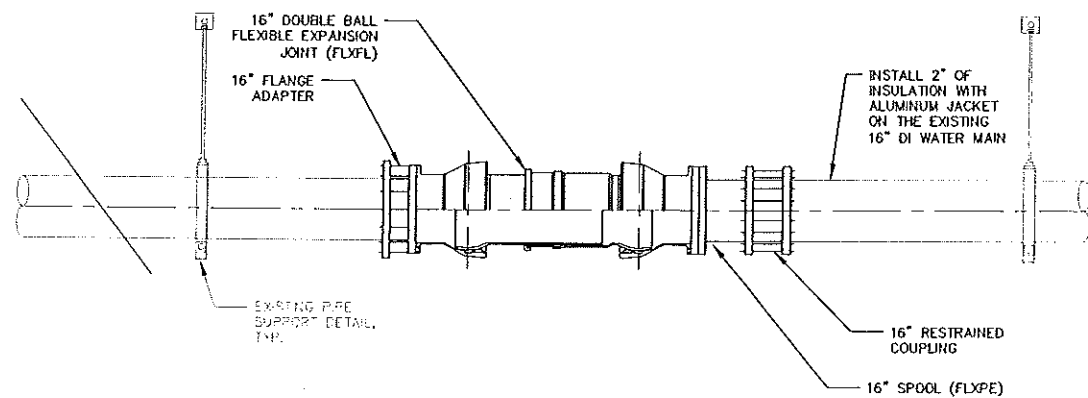
SHEET: C-3  
OF: 4  
JOB NO.: 10530  
DWG: STUCK WM PLAN



**WEST END  
DOUBLE BALL  
FLEXIBLE EXPANSION JOINT** (A)  
SCALE: 1/4"=1'-0"



**MODIFIED  
BRIDGE PIPE HANGER** (C)  
SCALE: 1"=1'-0"

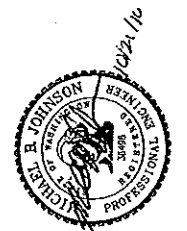


**EAST END  
DOUBLE BALL  
FLEXIBLE EXPANSION JOINT** (B)  
SCALE: 1/4"=1'-0"

**Gray & Osborne, Inc.**  
CONSULTING ENGINEERS  
2102 CARRIAGE DRIVE SOUTHWEST, BLDG. 1  
OLYMPIA, WASHINGTON 98502 • (360) 232-7481

DATE: OCT 2010  
SCALE: NOTED  
DRAWN: EH  
CHECKED: SLG  
APPROVED: MBJ

DATE	APPD
PRELIMINARY FOR AGENCY REVIEW	REVISION
No.	



**CITY OF PUYALLUP**  
PIERCE COUNTY WASHINGTON  
**WATER AND SANITARY SEWER  
SYSTEMS SEISMIC UPGRADES**  
STUCK RIVER BRIDGE WATER MAIN  
DETAILS

APPROVED  
BY \_\_\_\_\_  
CITY OF PUYALLUP  
ENGINEERING DEPARTMENT  
DATE \_\_\_\_\_  
NOTE:  
This approval is void after  
1 year from approval date.  
The City will not be responsible  
for errors and/or omissions on  
these plans.  
Field conditions may dictate  
changes to these plans as  
determined by the City Engineer.

SHEET: C-4  
OF: 4  
JOB NO.: 10530  
DWG: STUCK DETAILS