

Chapter 1

Introduction

Requirements of the Shoreline Management Act

In 1971, the State of Washington legislature enacted the Shoreline Management Act (SMA) in order to address growing concern about the quality of the state's shoreline environments. The Act (RCW 90.58) recognizes that "shorelines are among the most valuable and fragile" of the state's resources. The Act, and the City of Sumner, recognize and protect private property rights along the shoreline, while aiming to preserve the quality of this unique resource for all state residents.

The primary purpose of the Act is to provide for the management and protection of the state's shoreline resources by planning for their reasonable and appropriate use. A citizen's initiative in 1972 designated that the area to be regulated under the Act should include lands within two hundred (200) feet of the shoreline.

The City of Sumner's Role in Implementing the Shoreline Management Act

In order to protect the public interest in the preservation of the shorelines of the state, the Shoreline Management Act establishes a planning program coordinated between the state and local jurisdictions to address the types and effects of development occurring along the state's shorelines. By law, the City is responsible for the following:

1. Development of an inventory of the natural characteristics and land use patterns along shorelines covered by the Act. This inventory provides the foundation for development of a system that classifies the shoreline into distinct environments. These environments provide the framework for implementing shoreline policies and regulatory measures.
2. Preparation of a "Master Program" to determine the future of the shorelines. This future is defined through the goals developed for the following land and water use elements: economic development, public access, circulation, recreation, shoreline use, conservation, historical/cultural protection, and floodplain management. Local government is encouraged to adopt goals for any other elements, which, because of present uses or future needs, are deemed appropriate and necessary to implement the intent of the Shoreline Management Act. In addition, policy statements are developed to provide a bridge between the goals of the Master Program and the use activity regulations developed to address different types of development along the shoreline. Master Program regulations are developed and adopted, as appropriate, for various types of shoreline development, including the following: agriculture, aquaculture, forest management, commercial

development, marinas, mining, outdoor advertising and signs, residential development, utilities, ports and water related industries, bulkheads, breakwaters, jetties and groins, landfills, solid waste disposal, dredging, shoreline protection, road and railroad design, piers, and recreation.

3. Development of a permit system to further the goals and policies of both the Act and the local Master Program.

Local governments have the prime responsibility for initiating the planning program and administering the regulatory requirements. The City of Sumner must develop a Shoreline Master Program that is consistent with the guidance and intent provided in the Shoreline Management Act. The role of the Department of Ecology is to provide support and review of the Shoreline Master Program and subsequent shoreline permit requests.

Purposes of the Shoreline Master Program

The Shoreline Management Act defines a Master Program as a "comprehensive use plan for a described area." The shoreline planning process differs from the more traditional planning process in that the emphasis is on protecting the shoreline environment through management of uses rather than trying to maximize development potential.

The purposes of the Sumner Master Program are:

1. To carry out the responsibilities imposed on the City of Sumner by the Washington State Shoreline Management Act (RCW 90.58).
2. To promote the public health, safety, and general welfare by providing a guide and regulation for the future development of the shoreline resources of the City of Sumner.
3. To further, by adoption, the policies of RCW 90.58, and the goals of this Master Program, both described in this document.

Legislative Findings and Washington Shoreline Management Act Policies

According to the Revised Code of Washington (RCW) 90.58.020, the Washington State Legislature finds the shorelines of the state are among the most valuable and fragile of the state's natural resources and that there is great concern throughout the state relating to their utilization, protection, restoration, and preservation. In addition, it finds that ever-increasing pressures of additional uses are being placed on the shorelines, necessitating increased coordination in the management and development of the shorelines of the state. The legislature further finds that much of the shorelines of the state and uplands adjacent thereto are in private ownership and that unrestricted construction on the privately owned or publicly owned shorelines of the state is not in the best public interest; therefore, coordinated planning is necessary in order to protect the public interest associated with the shorelines of the state which, at the same time, shall be consistent with public interest. There is, therefore, a clear and urgent demand for a planned, rational, and concerted effort, jointly performed by

federal, state, and local governments, to prevent the inherent harm in an uncoordinated and piecemeal development of the state's shorelines.

It is the policy of the state to provide for the management of the shorelines of the state by planning for and fostering all reasonable and appropriate uses. This policy is designed to ensure the development of these shorelines in a manner that, while allowing for limited reduction of rights of the public in navigable water, will promote and enhance the public interest. This policy is intended to protect against adverse effects to the public health, the land and its vegetation and wildlife, and the water of the state and its aquatic life, while generally protecting public rights of navigation and its associated activities.

Shorelines of Statewide Significance -- the Puyallup River and the White (Stuck) River

The Shoreline Management Act designates certain shoreline areas as shorelines of statewide significance (RCW 90.58.030). Among western Washington shorelines designated were "natural rivers or segments" of rivers that are "downstream of a point where the mean annual flow is measured at one thousand cubic feet per second (cfs) or more" and "those shorelands associated with" these waters. The legislature determined that the Puyallup and White (Stuck) Rivers met these criteria, and in WAC 173-18, designated these rivers as waters having statewide significance.

Shorelines thus designated are important to the entire state. Because the shorelines of the Puyallup and White (Stuck) Rivers are a major resource from which all people in the state derive benefit, the Sumner Master Program gives preference to shoreline uses that favor public and long range goals. Accordingly, this Master Program gives preference to uses that meet the principles outlined below, listed in order of preference. These principles, defined in RCW 90.58.020, are incorporated into City of Sumner Shoreline Master Program:

1. Recognize and protect the statewide interest over local interest.
2. Preserve the natural character of the shoreline.
3. Result in long-term over short-term benefit.
4. Protect the resources and ecology of shorelines.
5. Increase public access to publicly owned areas of the shoreline.
6. Increase recreational opportunities for the public on the shoreline.

In the implementation of this policy, the public's opportunity to enjoy the physical and aesthetic qualities of natural shorelines of the state shall be preserved to the greatest extent feasible, consistent with the overall best interest of the state and the people generally. To this end, uses shall be preferred that are consistent with control of pollution and prevention of damage to the natural environment or are unique to, or dependent on use of, the state's shorelines. Alteration of the natural condition of the shorelines of the state, in those limited instances when authorized, shall be given priority for single family residences, ports, parks, marinas, piers, and other

improvements facilitating public access to shorelines of the state, and industrial and commercial developments that will provide an opportunity for substantial numbers of the people to enjoy the shorelines of the state.

Permitted uses in the shorelines of the state shall be designed and conducted in a manner to minimize, insofar as practical, any resultant damage to the ecology and environment of the shoreline areas, and any interference with the public's use of the water.

The Sumner Shoreline Master Program

1973 Shoreline Master Program

The City's original Shoreline Master Program was adopted in 1973 and based on then-current inventory information gathered by Pierce County. Every effort was made during the development of the 1973 Master Program to encourage citizen input through publicizing the three meetings held on September 6, October 4, and November 1, 1973. In addition to these meetings, a public hearing was held on December 6, 1973, and January 3, 1974, and a meeting before the Sumner City Council was held on January 7, 1974, for final adoption. Wide publicity occurred through advertising, news releases, the publication of a newsletter, and a variety of other means.

1991 Shoreline Master Program Update Draft

In 1990, the City began an update of the 1973 Master Program to update it to reflect new developments in shoreline management and shoreline ecology. The Sumner Planning Commission, in conjunction with City staff and a consultant team hired to prepare the new Master Program, held a series of public meetings and workshops to review the 1973 document and current shoreline management issues. Master Program amendments were discussed at four public meetings held on April 5, May 3, June 7, and July 3, 1990. Following public comment, the Planning Commission completed revisions to the draft in November 1990 and recommended its adoption to the City Council. Once a draft of the Master Program was ready for public review, a press release was issued by the local newspaper and an additional two public hearings were held to take public comment on the document. The Sumner City Council held a workshop to discuss the proposed changes to the Master Program, and then, on July 1, 1991, during regular session, passed Resolution No. 702, declaring their intent to adopt. In compliance with Washington State regulation, the proposed Shoreline Master Program was sent to the Department of Ecology. The City then suspended adoption of the proposed 1991 Shoreline Master Program until the State's revisions of the shoreline guidelines, underway at that time, were complete, in order to ensure that their draft would conform to the revised guidelines. That 1991 draft has provided the foundation for this update of the Sumner Shoreline Master Program.

2002 Shoreline Master Program Update

After a long period of development, in November 2000, the State Department of Ecology adopted new Shoreline Master Program guidelines. The new guidelines incorporated updated "best available science" into the recommended policy and regulatory framework. The new guidelines also provided jurisdictions with the

opportunity to pursue one of two “paths.” One path (Path A) required a general level of shoreline inventory information, and similar general policies and regulations. The second path (Path B) required jurisdictions to provide a more detailed inventory of shoreline conditions, as well as more specific policy and regulatory language addressing protection and restoration of the shoreline. The two-path option was intended to offer jurisdictions, through adoption of a “Path B” Shoreline Master Program, the opportunity to seek protection from “takings” allegations resulting from recent listings under the Endangered Species Act.

The City of Sumner decided to pursue the higher level of legal protection offered under the Path B option and began an update of its 1973 Shoreline Master Program in early 2001. The City developed its shoreline inventory and Master Program goals and policies consistent with the Path B option. That inventory was well underway by the time the appeal of the adopted guidelines was resolved and the new guidelines were declared invalid in August 2001. Although at the time of this Master Program’s final review (fall 2002) there are still no adopted shoreline management guidelines, the City is continuing to complete its Shoreline Master Program consistent with the Shoreline Management Act.

The City notified residents living within the shoreline jurisdiction of the Shoreline Master Program update process and invited them to attend Planning Commission meetings and provide comment. The City’s project mailing list has grown beyond just those living within the shoreline area to include the names of persons who have signed the attendance sheet up at Planning Commission meetings, or have otherwise notified the City of their desire to remain informed. The City has posted information about the Shoreline Master Program and shoreline inventory findings and maps on its website regularly, as well as Planning Commission agendas and meeting minutes. A public hearing on the draft Shoreline Master Program was held on September 5, 2002. After completing final revisions to the draft Master Program, on November 7, 2002, the Planning Commission voted to recommend to the Sumner City Council the adoption of the final Planning Commission draft of the Shoreline Master Program.

The City Council will reviewed the Planning Commission’s draft Master Program and held another public hearing on January 21, 2003. Following the hearing, the Council will made final changes per discussions and agreements with the U.S. Army Corp of Engineers, U.S. Fish and Wildlife Service, and the National Marine Fisheries Service on the conditions of a permit for the North Sumner Interchange. The City Council passed Resolution No. 1079 with an intent to adopt the Shoreline Master Program. Following their approval, the Master Program was forwarded to the Department of Ecology for their final review and comment. The Department of Ecology approved the Shoreline Master Program on February 9, 2004 and the City Council adopted it on May 17, 2004.

Sumner Setting

Sumner is located in Pierce County, approximately 16 miles east of Tacoma and 33 miles south of Seattle at the confluence of the Puyallup and White (Stuck) Rivers. Both rivers are designated as rivers of statewide significance and are the only two shorelines that are addressed in this Master Program (see Figure 1-1).

The Master Program addresses both shorelines within the current city limits of Sumner as well as shorelines within Pierce County that are planned for annexation to the City of Sumner. The Master Program shall apply to any shorelines that are officially within the city limits of Sumner, now or in the future (see Figure 1-1).

Sumner Shoreline Jurisdiction

Shoreline jurisdiction within the City of Sumner includes the Puyallup and White (Stuck) Rivers, all lands that are located within 200 feet of the floodway edge or ordinary high water mark (OHWM), whichever is further landward, and any associated wetlands. Because the shoreline within Sumner's city limits and urban growth area is largely constrained by a system of dikes, for the purposes of the inventory, the shoreline jurisdiction is assumed to extend to two hundred (200) feet landward from the top of each river's bank.

Natural Features of the Sumner Shoreline

Figure 1-2 illustrates the 100-year floodplain as delineated on the Federal Emergency Management Administration (FEMA) maps. The boundaries shown in this figure are approximate and in some cases may not be accurate due to flood prevention measures. While the Shoreline Management Act allows jurisdictions to extend their shoreline jurisdictional boundaries to the 100-year floodplain boundary (assuming this boundary is at least 200 feet from the ordinary high water mark), the City of Sumner is establishing its shoreline jurisdiction as being only that area within 200 feet of the OHWM, and those wetlands with hydraulic continuity with the shoreline,.

Figure 1-2 also illustrates wetlands within the City of Sumner planning area. Wetlands that are located within the floodplain of the White (Stuck) and Puyallup Rivers are also "associated." Wetlands located outside of the 100-year floodplain *may* be associated. In order to determine if such wetlands do influence, or are influenced by, the White (Stuck) or Puyallup Rivers, a site-specific determination must be made to determine if they should be included within shoreline jurisdiction.

Wetlands shown on this Figure were identified and mapped in a geographic information system (GIS) format as a part of Pierce County's Buildable Lands Inventory and the National Wetland Inventory.¹

Shoreline inventory information provides the basis for designating the shoreline environments and management policies that will affect each part of the shoreline. Factors such as existing development patterns, biophysical capabilities and limitations, and the aspirations of the local citizenry all play a part in the shoreline environment designation categories selected. The management policies developed for each shoreline environment determine the uses and activities that can be permitted within each environment, and support the specific development standards that are also established. Three shoreline environments have been developed for the

¹ The data used in the County's Buildable Lands Inventory was based on a wetland study prepared for the City by Parametrix, Inc. (1990), and from National Wetland Inventory data. The data used in the maps accompanying this SMP are based on the GIS data available in the Buildable Lands Inventory and the National Wetland Inventory.

Sumner shoreline: Urban Conservancy, Shoreline Residential, and Urban. These environments are discussed in *Chapter 4: Shoreline Environments* and shown on Figure 4-1 at the end of Chapter 4.

How the Shoreline Master Program is Used

The City of Sumner Shoreline Master Program is a planning document that outlines goals and policies for the shoreline of the City and establishes regulations for development occurring in that area. The goals and policies of the Shoreline Master Program are included in the City's Comprehensive Plan. The development regulations are adopted and codified in the Sumner Municipal Code.

In order to preserve and enhance the shorelines of the City of Sumner it is important that all development proposals relating to the shoreline area be evaluated in terms of the City's Shoreline Master Program, and that the City Shoreline Administrator be consulted. (In the City of Sumner, the Shoreline Administrator function is provided by the Director of Community Development and Parks.) Some developments may be exempt from regulation, while others may need to stay within established guidelines, or may require a Conditional Use permit or Variance; **ALL** proposals must comply with the policies and regulations established by the state Shoreline Management Act as expressed through this local Shoreline Master Program adopted by the City of Sumner.

The Shoreline Management Act (SMA) defines for local jurisdictions the content and goals that should be represented in the Shoreline Management Programs developed by each community; within these guidelines, it is left to each community to develop the specific regulations appropriate to that community. Under the SMA, all shorelines of the state meeting the criteria established receive a given shoreline environmental designation. The purpose of the shoreline designation system is to ensure that all land use, development, or other activity occurring within the designated shoreline jurisdiction is appropriate for that area and provides consideration for the special requirements of that environment. Sumner has designated its shoreline under three shoreline environments: Urban Conservancy, Shoreline Residential, and Urban. These environments are described in *Chapter 4: Shoreline Environments*.

When is a Permit Required?

The Sumner Shoreline Master Program addresses a broad range of uses that could be proposed in the shoreline area. This thoroughness is intended to ensure that the Sumner shoreline area is protected from activities and uses that, if unmonitored, could be developed inappropriately and could cause damage to the ecological system of the shoreline, or cause the degradation of the aesthetic values of the shoreline that the community enjoys. The Shoreline Master Program provides the regulatory parameters within which development may occur, or it states that the community considers a certain type of use or activity is unacceptable within the City's shoreline jurisdiction, or it states that a use or activity may be considered (if a Conditional Use permit is applied for), but that the community should be able to ensure that the

development is carried out in such a way that the public's interest in protecting the shoreline is retained.

The Permit Process

The Shoreline Master Program regulates “development,” and further defines what is considered “substantial development” and would, therefore, require a Shoreline Substantial Development Permit (SSDP), unless exempt. Some development may require a Conditional Use permit or a Variance from the provisions of the Master Program. Review under the State Environmental Policy Act (SEPA) may also be required.

“**Development**,” as defined under the Shoreline Management Act of 1971 is:

A use consisting of the construction or exterior alteration of structures; dredging; drilling; dumping; filling; removal of any sand, gravel, or minerals; bulkheading; driving of piling; placing of obstructions; or any project of a permanent or temporary nature which interferes with the normal public use of the surface of the waters of the state subject to Chapter 90.58 RCW at any state of water level (RCW 90.58.030(3d)).

This definition indicates that the “development” regulated by the Shoreline Management Act includes not only those activities that most people recognize as “development” (for example, improving a road surface, building a structure), but also those activities that citizens may do around their own home (for example, grading an area of riverfront to enhance their personal view of the river). While the impact of these potential “developments” may seem inconsequential at first glance, they may have unwanted and damaging affects on the river ecology, the property of others, and the shoreline aesthetics.

Projects that are identified as “developments” and not “substantial developments” do not require a shoreline Substantial Development Permit, however they must still comply with all applicable regulations in the City's Shoreline Master Program. In addition, some developments may require a Conditional Use permit or a Variance from the Shoreline Master Program's provisions, although they do not meet the definition of a “substantial development.”

“**Substantial development**” is any “development” of which the total cost or fair market value exceeds five thousand dollars (\$5,000), or any development that materially interferes with the normal public use of the water or shorelines of the state. Under the Shoreline Management Act, some types of development are exempt from the requirement to apply for and receive a permit before beginning work.² These exemptions are listed in *Chapter 8: Administration*. A project that is exempt from permit requirements must still comply with all applicable regulations in the City's Shoreline Master Program.

The City Shoreline Administrator can help identify if a project is classified as a development or a substantial development, determine if a permit is necessary or if a

² Per RCW 90.58.030(3)(e), Definitions and concepts: Substantial development.

project is exempt from permit requirements, and identify which regulations in the SMP may apply to the proposed project. The Administrator can also provide information on the permit application process and how the SMP process relates to, and can coordinate with, the State Environmental Policy Act (SEPA) process. The permitting process can be divided into three phases: pre-application, submittal, and review (these are discussed in greater detail in *Chapter 8: Administration*).

The Shoreline Permit

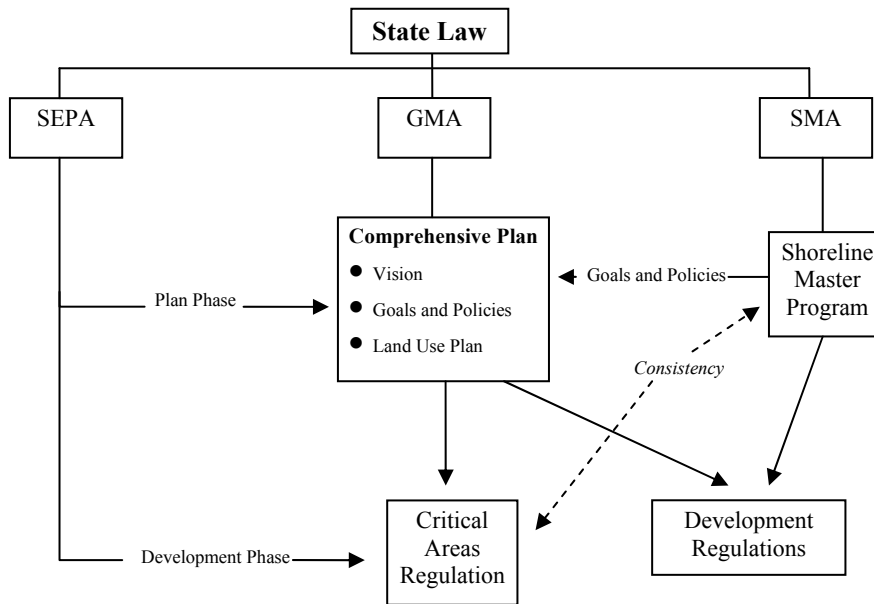
There are three types of shoreline permits: the shoreline Substantial Development Permit, the shoreline Conditional Use permit, and the shoreline Variance permit. All of these permits use the same application form; however, they are processed slightly differently.

Requests for a shoreline Substantial Development Permit, Variance, or a Conditional Use permit require review by the City of Sumner Hearing Examiner (per Sumner Municipal Code, Chapter 18.56). There may be instances where a Conditional Use permit or Variance may be approved without the need for a Substantial Development Permit. The Hearing Examiner will hold a public hearing on the proposal and approve, approve with conditions, or deny the application. This decision can be appealed to the Sumner City Council. Appeals of the City Council decision go to the State Shoreline Hearings Board. Requests for Conditional Use permits and Variances require final approval by the State of Washington Department of Ecology. A description of exempt projects, and shoreline application procedures and criteria are discussed in *Chapter 8: Administration*.

A description and map of the area within the jurisdiction of this Shoreline Management Program are presented in *Chapter 4: Shoreline Environment*.

Relationship of this Shoreline Master Program to Other Plans

In addition to compliance with the provisions of the Shoreline Management Act of 1971, the Sumner Shoreline Master Program must be consistent with local plans and policy documents, specifically, the Sumner Comprehensive Plan and the City's critical area regulations. The City's Shoreline Master Program must also be consistent with the regulations developed by the City to implement its plans, such as the zoning code and subdivision code, as well as regulations relating to building construction and safety. The relationships between state law and local regulations are shown in the following diagram:



Submitting to the permitting process for a shoreline development or use does not exempt an applicant from complying with any other local, county, state, regional, or federal statutes or regulations, which may also be applicable to such development or use. Examples of activities that may require permits, review, or approval from other agencies are listed in the following table. Some of the activities listed below are unlikely to occur within the Sumner shoreline jurisdiction. The following list of permits is provided, however, as additional information about regulatory requirements that exist for various land use activities that may occur in the Sumner area.

Agency	Authority/Jurisdiction	Types of Activity Requiring Permit	Permit
Federal Emergency Management Agency (FEMA)	CFR 44, Part 60 This Ordinance applies to the areas designated as flood zones on FEMA's Federal Insurance Rate Map. The adopted FEMA ordinance enables City residents to acquire federal flood insurance and allows Sumner to be eligible to receive Federal Flood Disaster Funds.	All construction within and uses of the Floodplain must meet the standards established in the Sumner Municipal Code, Chapter 15.52 and 16.58.	Review for compliance with FEMA guidelines is conducted through enforcement of the Sumner Flood Damage Prevention Regulations.
Army Corps of Engineers	Sect. 10 of Federal River & Harbor Act Jurisdiction extends to Ordinary High Water Mark of the navigable waters of the US	Structures or work in these waters, including marinas, piers, wharves, floats, intake pipes, outfall pipes, pilings, bulkheads, boat ramps, dredging, dolphins, fills, overhead transmission lines, etc.	Section 10 Permit
	Sect. 404 of Clean Waters Act Jurisdiction extends to Ordinary High Water Mark of all waters of the US and includes all adjacent wetlands	Discharge of dredged materials, fills, grading, ditch sidelaying, groins, breakwaters, road fills, beach nourishment, riprap, jetties, etc.	Section 404 Permit (some limited activities are covered by nationwide general permits)

Agency	Authority/Jurisdiction	Types of Activity Requiring Permit	Permit
Washington Department of Agriculture	Varies	Use of pesticides by any means other than hand pumped device - varied restrictions apply depending on the ownership of the property receiving the pesticide, the type of pesticide, etc.	Varies
Washington State Department of Fish and Wildlife (DFW)	RCW 75.20.100-160. All fresh or salt water in the state	Work, construction, development, or other activities that will change the natural flow or bed of any fresh or salt water in the state.	Hydraulic Project Approval (HPA)
Washington State Department of Natural Resources (DNR)	RCW 79.90. Navigable water bodies, including certain lakes, rivers, and streams. These waters are owned by the State of Washington.	Construction, filling, dredging, drilling, mining, road construction, utility installation, etc., within the beds or shorelines of these waters.	Aquatic Lands Lease and/or Authorization.
	RCW 76.09. Waterbodies near forest activities	Forest activities relating to growing, harvesting or processing timber, road construction and maintenance, brush clearing, slash disposal.	Forest Practice Approval
Washington State Department of Ecology (DOE)	Section 401, Clean Water Act	Any activity that might result in a discharge of dredge or fill material into water or wetlands, or excavation in water or wetlands that requires a federal permit.	Water Quality Certification
	RCW 90 (various chapters)	Withdrawal of surface or ground water.	Water Use Permit; Certificate of Water Right
	RCW 43.21C Determined by the scope of the project. See also: City of Sumner, SEPA.	SEPA is a process that provides a way to analyze and address the environmental impacts of a project and is geared to mesh with already existing permits, approvals, and/or licenses.	State Environmental Policy Act (SEPA) Review
	Water Pollution Control Act (RCW 90.48)	Act prohibits discharges of polluting matter to any waters of the state, including wetlands. A permit is required for any project potentially impacting state waters.	Various permits, including NPDES, Municipal Wastewater, and Septic permits.
City of Sumner	Sumner Shoreline Master Program - SMP jurisdiction is listed in Chapter 1 of this document (Shoreline environments are provided in Chapter 4).	Development within the shoreline jurisdiction of Sumner.	Shoreline Substantial Development Permit
			Shoreline Conditional Use Permit
			Shoreline Variance
	Sumner Municipal Code, Chapter 15.08	Development over 120 Square feet. See Uniform Building Code	Building Permit

Agency	Authority/Jurisdiction	Types of Activity Requiring Permit	Permit
City of Sumner (continued)	Sumner Municipal Code, Chapter 15.52 is adopted code intended to carry out FEMA requirements within the 100-year floodplain	All development activity, including buildings, mining, filling, dredging, grading, paving, excavations, drilling operations, and storage of equipment or materials.	Floodplain Development Permit - review for compliance with this ordinance is conducted as a part of the development review and building permit process.
	Title18, Zoning Code	Development within the City of Sumner	Zoning Variance Zoning Conditional Use Zone Change
	Title 16, Critical Areas Ordinance	Development in a Critical Area (Wetlands, Wildlife Habitat Areas, Aquifer Recharge Areas, Flood Hazard Areas, Geologic Hazard Areas, etc.)	Critical Areas Ordinance Regulations
	Sumner Municipal Code, Chapter 16.04 contains the Sumner State Environmental Policy Act (SEPA) Policies (This is the local ordinance intended to carry out the state SEPA requirements.)	All activity meeting the threshold identified in RCW 43.21C and WAC Chapter 197-11.	State Environmental Policy Act (SEPA) Review
	Sumner Municipal Code, Chapter 16.05 – Control of Erosion and Sedimentation of Waterways (Stormwater Quality)	Fill or grading over 50 cubic yards of material.	Temporary Sedimentation and Erosion Control Permit

At the time of an initial inquiry or when a permit application is submitted, the City Shoreline Administrator should inform an applicant of those regulations and statutes that may be also applicable to the proposed project to the best of the administrator's knowledge, PROVIDED, that the final responsibility for complying with such other statutes and regulations shall rest with the applicant.

Other activities that could occur along the shoreline (starting bonfires, disposing or spilling/releasing of regulated or hazardous waste products, use of pesticides, activities within wetlands) may require other permits, review, or approval not identified here. **Questions about permits, licenses, or review may be directed to the City of Sumner Community Development and Parks Department at 253.891.3303 or through the City website at www.ci.sumner.wa.us.**

Title

This document shall be known and may be cited as the **Sumner Shoreline Master Program**. This document may refer to itself as "this Master Program."